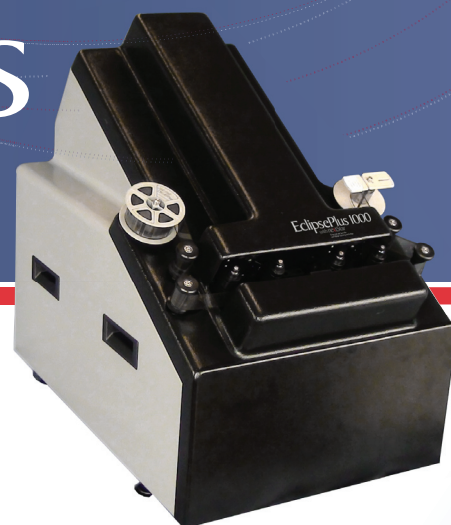


Eclipse 1000 Plus

with nextStar

Enhanced with LuminTec
and Ribbon Scanning technology



Eclipse 1000 Plus

High Production
Rollfilm Scanner

Introducing the only high definition archival quality scanner in the market today.

The Eclipse 1000 Plus Rollfilm Scanner Family with NextStar High Performance Workflow Software incorporates nextScan's exclusive LuminTec™ light line illumination system for even sharper images and delivers the highest scan speeds for production scanning environments.

The Eclipse 1000 Plus Scanner Family with NextStar scans 16 and 35mm microfilm, and is available in three models – the Eclipse Plus 1000A, Eclipse Plus 1000B and Eclipse Plus 1000HD. The Eclipse Plus 1000 Scanner Family provides the most cutting edge technologies for film scanning, and each model is designed to provide flexibility for sometimes large and complex scanning applications. Each Eclipse 1000 Plus scanner model offers high speeds for uncompressed data output, and even higher speeds if the user opts for compressed data output, which can be useful for simpler scan jobs.

Eclipse 1000A Plus: Scan speeds from 600 ppm for uncompressed 8 bit data and/or 1000 ppm 8 bit compressed

Eclipse 1000B Plus: Scan speeds from 1000 ppm for uncompressed 8 bit data and/or 1000 ppm 8 bit compressed

Eclipse 1000HD Plus: Scan speeds from 1000 ppm for uncompressed 12 bit data and/or 1000 ppm 12 bit compressed

All Eclipse 1000 Plus models feature a unique, advanced light line illumination system developed exclusively by nextScan called LuminTec. LuminTec effectively increases overall image resolution, even at very high conversion speeds, without increasing file size. Environmentally friendly LuminTec uses 1/10 the power of conventional incandescent light systems.

The NextStar high performance workflow software that comes with the Eclipse 1000A Plus and 1000B Plus models incorporates an innovative processing methodology called "Ribbon Scanning". Ribbon Scanning allows the user to verify that all images are properly captured and automatically identifies any image detection or density problems. Ribbon Scanning captures all images in raw, uncompressed form using true optical dpi. NextStar eliminates the need for rescans, maximizing the Eclipse 1000 Plus scanner utilization and productivity without compromising image quality. The Eclipse 1000HD Plus model comes with NextStar HD Software, an enhanced version of NextStar, for applications with the very highest of image quality requirements such as degraded historical documents or newspapers, achieving archival quality.

Each Eclipse 1000 Plus model comes with a specially designed Ribbon Storage Device (RSD) to enable simultaneous capture and output, maximizing scanner throughput and allowing for QA/Audit during or after the scan, even from multiple workstations. The Eclipse 1000 Plus model is available with your choice of chassis for added flexibility – either allowing for an RSD inside the scanner (Internal) or an external RSD.

The Eclipse 1000 Plus Scanner Family, featuring the innovative LuminTec light line illumination system, makes images sharper with better edge definition, enabling optimization of the many valuable NextStar and NextStar HD software features, ultimately contributing to the fastest throughput and highest OCR accuracy during and after the scanning process.

nextScan

The Next Generation in Film and Fiche Scanning Technology

Eclipse 1000 Plus

with nextStar

Enhanced with LuminTec
and Ribbon Scanning technology

NextStar Software Functionality

Eclipse Plus combined with the latest NextStar software introduces an innovative processing methodology called Ribbon Scanning. An entire roll of film is digitized from top-to-bottom and end-to-end in grayscale and stored as a single ribbon file.

Ribbon Scanning solves many of the challenges encountered today in the conversion process from microfilm to digital images. The latest NextStar software, with its innovative Ribbon Scanning, combined with the unique LuminTec light line illumination systems was designed to reduce conversion costs while boosting productivity. NextStar allows the user to verify that all images were properly captured, and enhance image quality as needed. NextStar then allows the operator to correct those issues in a post-scan audit environment. NextStar eliminates the need for rescans resulting from density or frame detection problems, maximizing scanner utilization and productivity. With NextStar's superior image quality, handling any density and filming related issues commonly faced in conversion processes is easy, outputting images that actually match your database.

NextStar enables the user to manage the end-to-end conversion process. It is modular and expandable. From basic set-ups where all components run on the Eclipse Plus scanner, to large distributed production systems, the software components communicate between multiple platforms and work is scheduled and shared between many operators.

For applications with the very highest image quality for archival requirements such as the scanning of degraded historical documents or newspapers, NextStar High Definition (HD) is an option. The HD version of NextStar includes all of the features of the regular NextStar software, plus can provide up to 12 bit uncompressed output images, which enables even higher OCR accuracy for projects where this is a must. NextStar HD is included with the Eclipse 1000HD Plus Scanner.

NextStar's unique features are:

- Reliability, no images are lost during scanning
- Automatic film classification and frame detection
- Post-Scan frame detection allowing correction by audit operator of any errors before output
- Re-audit / QA capability
- Individual frame-by-frame image processing options if needed
- Insert/Delete frames or images while maintaining file naming conventions
- Automatic lamp & gamma adjustment during setup and scanning

Eclipse 1000 Plus w/NextStar Specifications

SPEED

1000A: 600 ppm uncompressed 8 bit data and/or 1000 ppm 8 bit compressed
1000B: 1000 ppm uncompressed 8 bit data and/or 1000 ppm 8 bit compressed
1000HD: 1000 ppm uncompressed 12 bit data and/or 1000 ppm 12 bit compressed
High speed rewind
Pre-scan film cleaning (both sides)
Patented transport carriage to secure linearity (eliminates distortion)

INCLUDED – Preconfigured 12TB Ribbon Storage Device (RSD) for simultaneous capture and output

Maximize throughput speed and productivity
Optional 24TB configuration also available

SOFTWARE – NextStar

(Scan, Detect, Audit, Output)

Automatic lamp & gamma adjustment during setup and operation
Rotate, mirror, crop, deskew, despeckle and edge enhancement filters
Industry leading auto thresholding for bitonal images
Independent image processing filters for each output image
Multi image output in different formats
Original optical resolution or interpolated (thumb-nails)
Tri level blip detection and naming
Flexible file naming and index file generation
Standalone or domain workflow end-to-end management and reporting

OPTICS/CAMERA

LuminTec light line illumination system (patent pending)
10 bit, optional 12 bit CCD array for 1000HD
True gamma correction & auto focus
High quality lens
8192 Pixel CCD / optional 12288 Pixel CCD

Operating Systems and Hardware:

Windows XP Pro, Windows 7 (32 & 64 bit)
Latest Quad Core AMD CPUs
Large SATA II hard drive
Dual 1GB Network Interface

Film Polarities: positive, negative and mixed

Reduction Ratio: 4x to 96x

Resolution: 100 – 600 dpi

Document Sizes: to E-size drawings at 200 dpi and oversize documents like oil well logs and EKGs (Image must fit in memory, 2GB max image size)

Film Size: 16 and 35 mm

Film Formats: Duplex, Duo, Blipped/Unblipped

Film Orientation: Comic, Cine

Film Types: Vesicular, Blue and Black Diazo, Silver

File Formats: TIFF monochrome, TIFF uncompressed, Multi Page TIFF, JPEG, CALS, PDF/A, multi page PDF and JPEG 2000

Physical Characteristics:

Height – 28", Width – 19", Depth – 22", Weight – 75 lbs

*speed varies depending on image enhancement option

nextscan

690 S. Industry Way • Meridian, ID 83642
(208) 514-4000

www.nextscan.com
sales@nextscan.com

Eclipse Plus currently available in US and Canada only

nextScan, Eclipse, FlexScan, Titan, NextStar, LuminTec and Fusion are trademarks or registered trademarks of nextScan. All other company and product names are trademarks or registered trademarks of their respective holders.